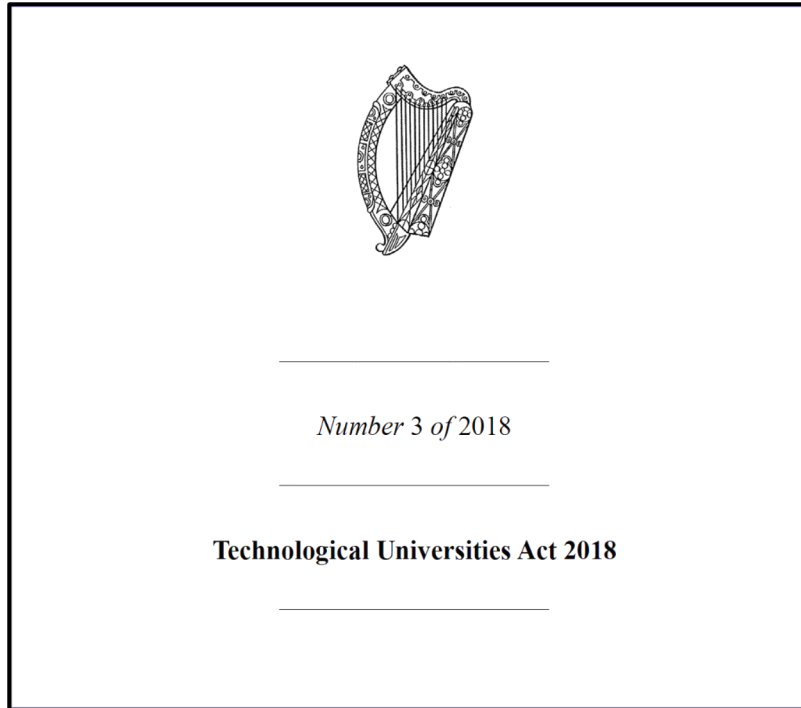


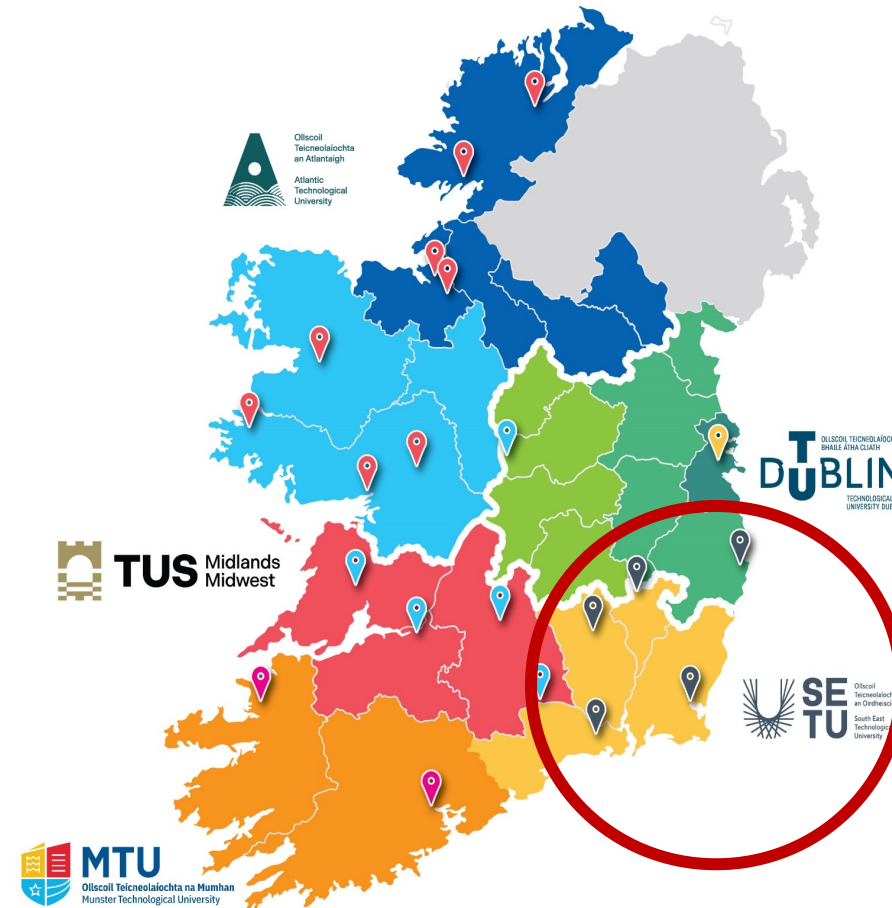
Institutional Transformation: A Reflection from Ireland's newest TU

Prof. Veronica Campbell, President,
South East Technological University

Technological University Sector in Ireland



Technological Universities Act 2018



SETU Overview



10,626
Full-time students



6,473
Part-time students



850+
International students



17,099
Total students



6,696
Graduates
(2022)



1,400
Staff



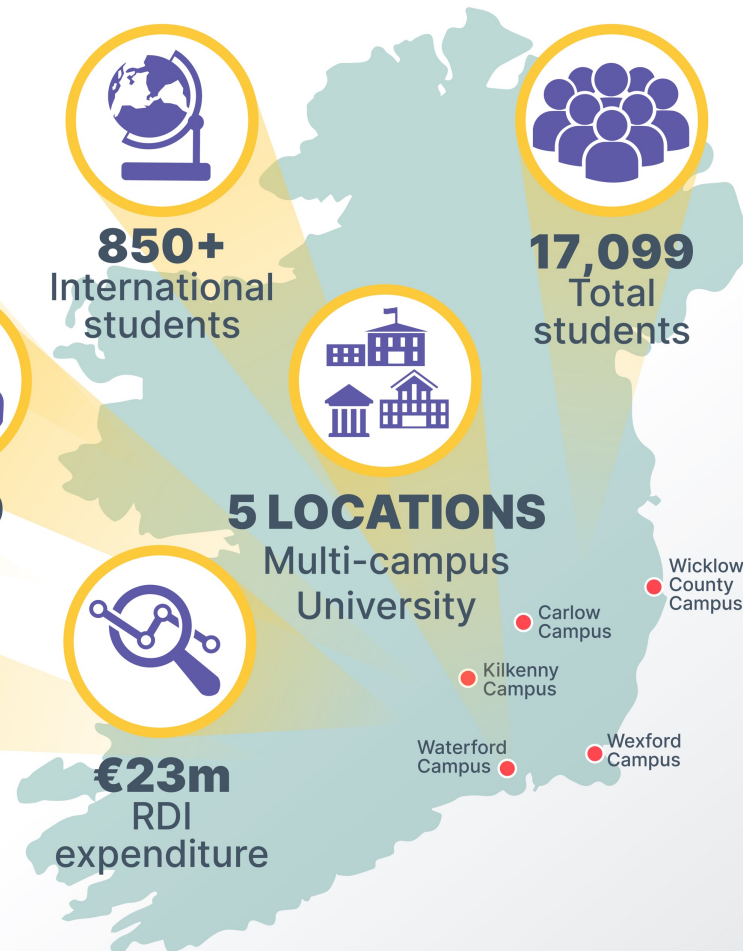
5 LOCATIONS
Multi-campus
University



€173m
Core
funding



€23m
RDI
expenditure



CONNECTING FOR IMPACT

South East Technological University

Strategic Plan 2023-2028

SETU Strategic Plan

The Strategic Plan 2023-2028 sets out priority objectives in four areas:

**Innovation
and Research**



Our Learners



Our Engagement



Our Staff



Enablers

SETU Strategic Plan

SETU NOW

Academic TO Professional/ Managerial/ Support Staff
2 to 1 RATIO

€ CORE INCOME
€173 million

400 UNIVERSITY STUDENT ACCOMMODATION

STAFF TRAINING & DEVELOPMENT EXPENDITURE
€300k
1.5% of non-pay budget

NO FULL PROFESSOR GRADES

CARBON EMISSIONS
CO₂
3.8 m kg

Baseline International Ranking
INTERNATIONAL STUDENTS
= 270 ERASMUS
200 TRANS-NATIONAL
4% NON-EU

140 ENTERPRISE RESEARCH AGREEMENTS
VALU **€1.6m**

€23m per annum DIRECT RESEARCH EXPENDITURE

1400 FULL-TIME STAFF
365 ACADEMIC STAFF with PhDs

3 DEPARTMENTAL BRONZE ATHENA SWAN AWARDS

125,000 M² of CAMPUS BUILDINGS

200 PhD STUDENTS

19,200 Student Enrolments

SETU 2028

Academic TO Professional/ Managerial/ Support Staff
2 to 1.5 RATIO

€ CORE INCOME
€195 million

1160 UNIVERSITY STUDENT ACCOMMODATION

STAFF TRAINING & DEVELOPMENT EXPENDITURE
+30% per annum

20 FULL PROFESSORS

CARBON EMISSIONS
CO₂
50% REDUCTION

Improved International Ranking
INTERNATIONAL STUDENTS
= 350 ERASMUS
x10 TRANS-NATIONAL
8% NON-EU

30% INCREASE ENTERPRISE RESEARCH AGREEMENTS
VALU **€**

€27.5m per annum DIRECT RESEARCH EXPENDITURE

>1500 FULL-TIME STAFF
485 ACADEMIC STAFF with PhDs

8 DEPARTMENTAL BRONZE ATHENA SWAN AWARDS

179,000 M² of CAMPUS BUILDINGS

400 PhD STUDENTS

>21,000 Student Enrolments



Our Region



...be recognised as the regional **anchor institution** and **positive change agent**, including with regard to **sustainability**



...deeply embedded in regional and **national enterprise, social and business networks**, supporting **lifelong learning** for a **diverse audience**, **connected internationally** and acting as a magnet for international talent and a vehicle for strengthening regional sustainable practices and thinking



Global Collaboration

- EU-CONEXUS European University
- European University Association
- TrustEd Ireland Quality Mark

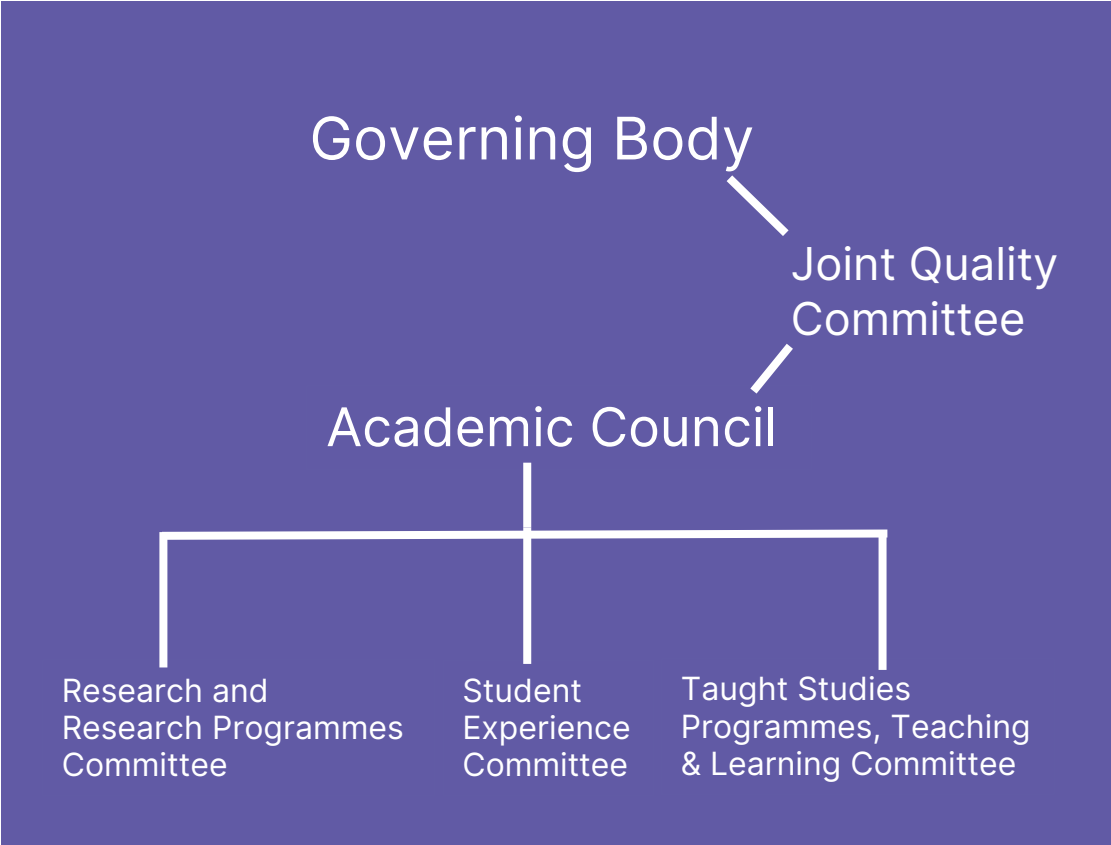


Collaborations and top research areas from the last five years



Academic Structures

- Academic Council Design
- Academic Policy Development
- CINNTE review process – Oct. 2024

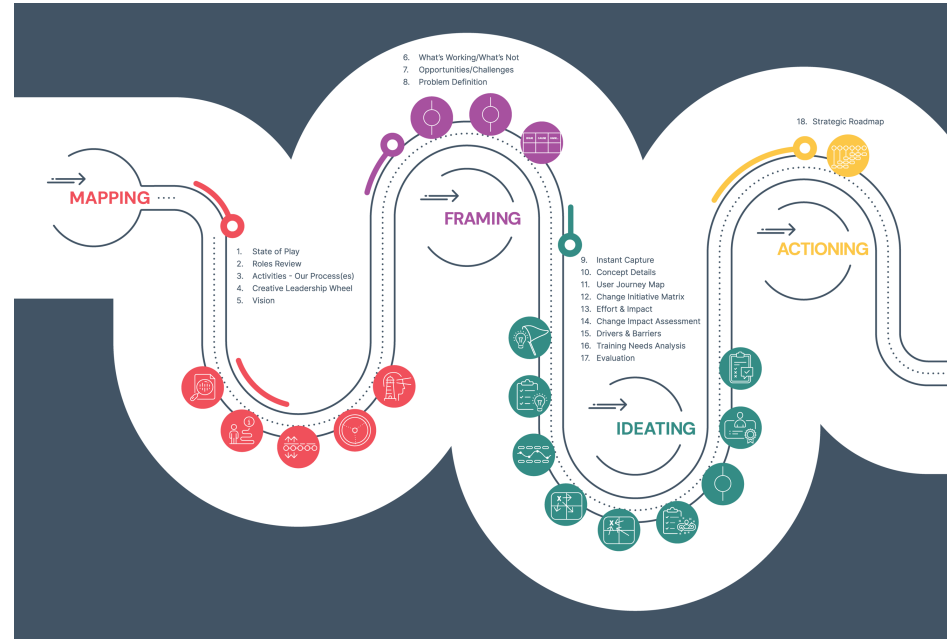


Academic Council Design – March 2024

Change Management Project



SETU Toolkit



Change Management Process



Workshops

N-TUTOR - Staff and student engagement



SETU

- 1,893 students
- 1,017 staff

(August 2024)

TU Sector (5 institutions)

- 15,425 students
- 4,883 staff

Generative AI at SETU



SETU GenAI Outputs

- Assessment Redesign Framework and short courses
- Student guidelines course
- PD events – ‘AI Play’, Hackathons, webinars, DEC24 Conference
- Staff and student hubs
- Infographics, podcasts, video tutorials
- Publications

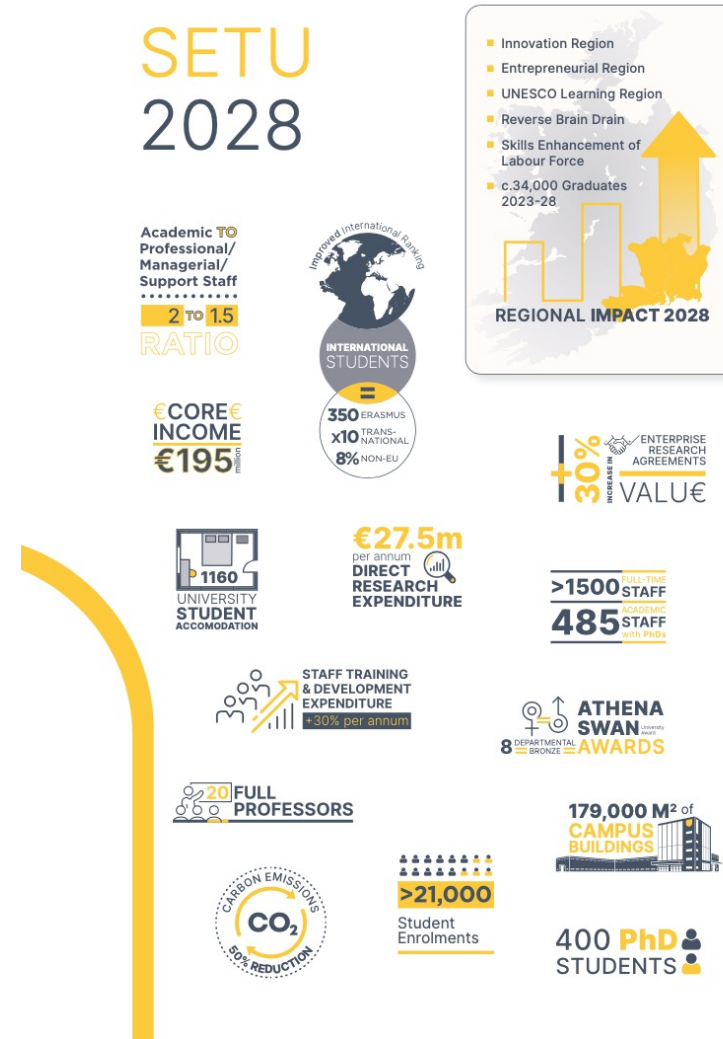
SETU Strategic Plan – progress

Achieved:

- Veterinary Medicine Course
- Pharmacy Course

To do:

- TU Professor Grades
- Senior Executive Grades



Our Future



Thank you

setu.ie
INSPIRING FUTURES

