

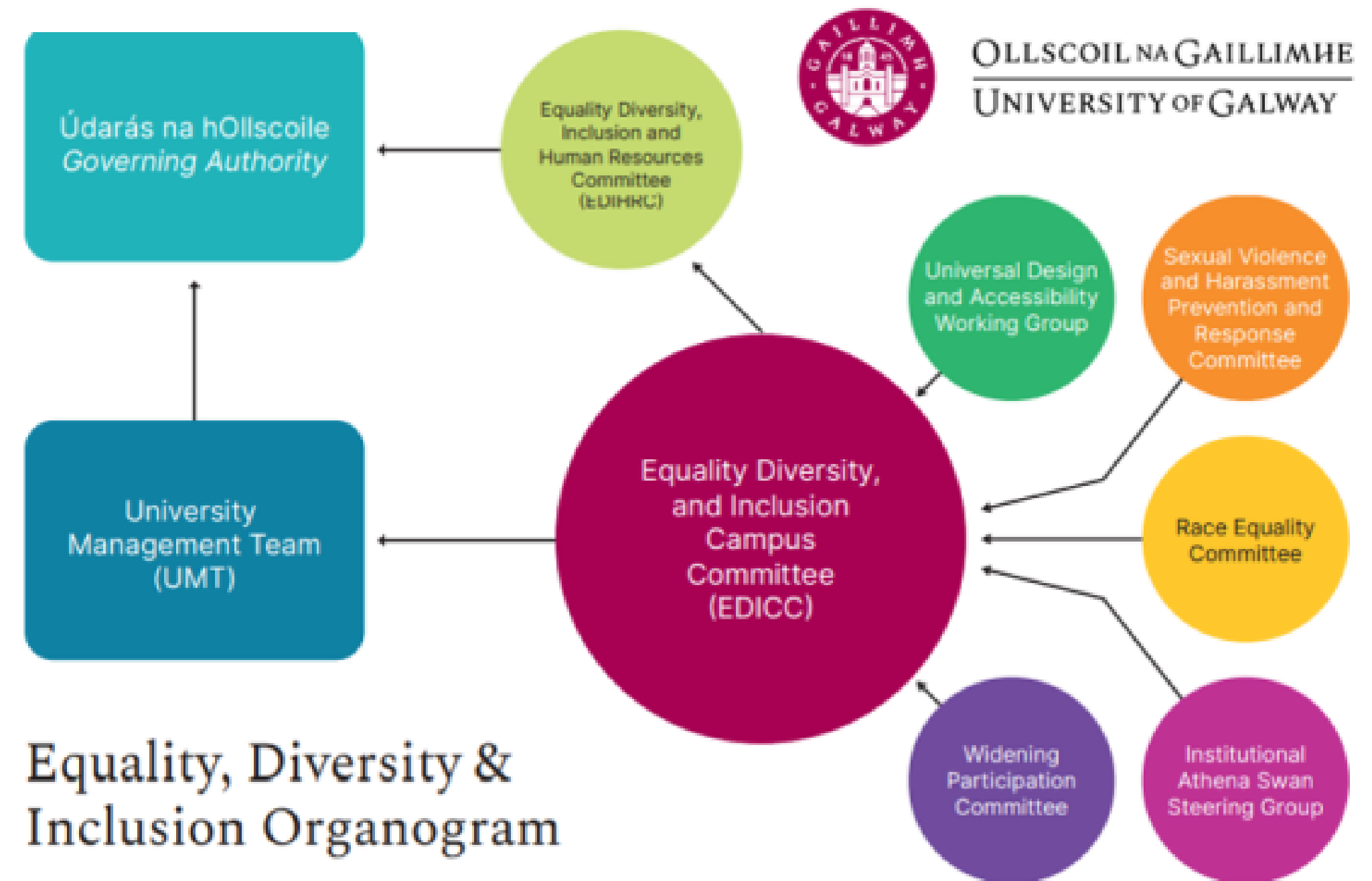


OLLSCOIL NA GAILLIMHÉ
UNIVERSITY OF GALWAY

Widening Participation at the University of Galway

Widening Participation Committee

- Established in 2020, the University of Galway's Widening Participation Committee (WPC) is a sub-committee of the Equality, Diversity and Inclusion Campus Committee (EDICC).
- It was established to support and monitor the University's strategic plans on widening access.
- The committee is comprised of members from the University's four Colleges, students, professional services staff, and external stakeholders.



Equality, Diversity & Inclusion Organogram

Equality, Diversity and Inclusion Governance at University of Galway



WP Committee Objective

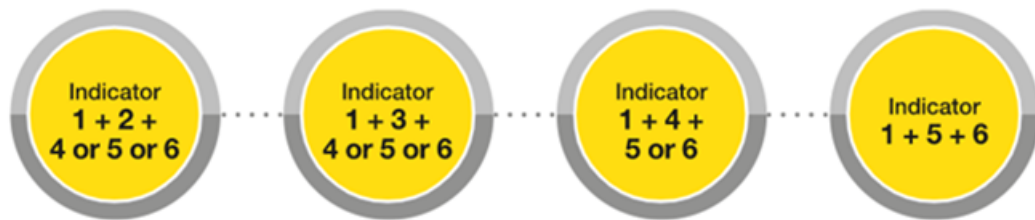
- An important objective of the WP committee has been to create and disseminate an annual WP Committee Report, outlining the University's ongoing efforts to increase the educational opportunity of students traditionally regarded as underrepresented in HE.
- This report contains data from our SRS, as well as updates and data from the many ongoing initiatives in University of Galway.



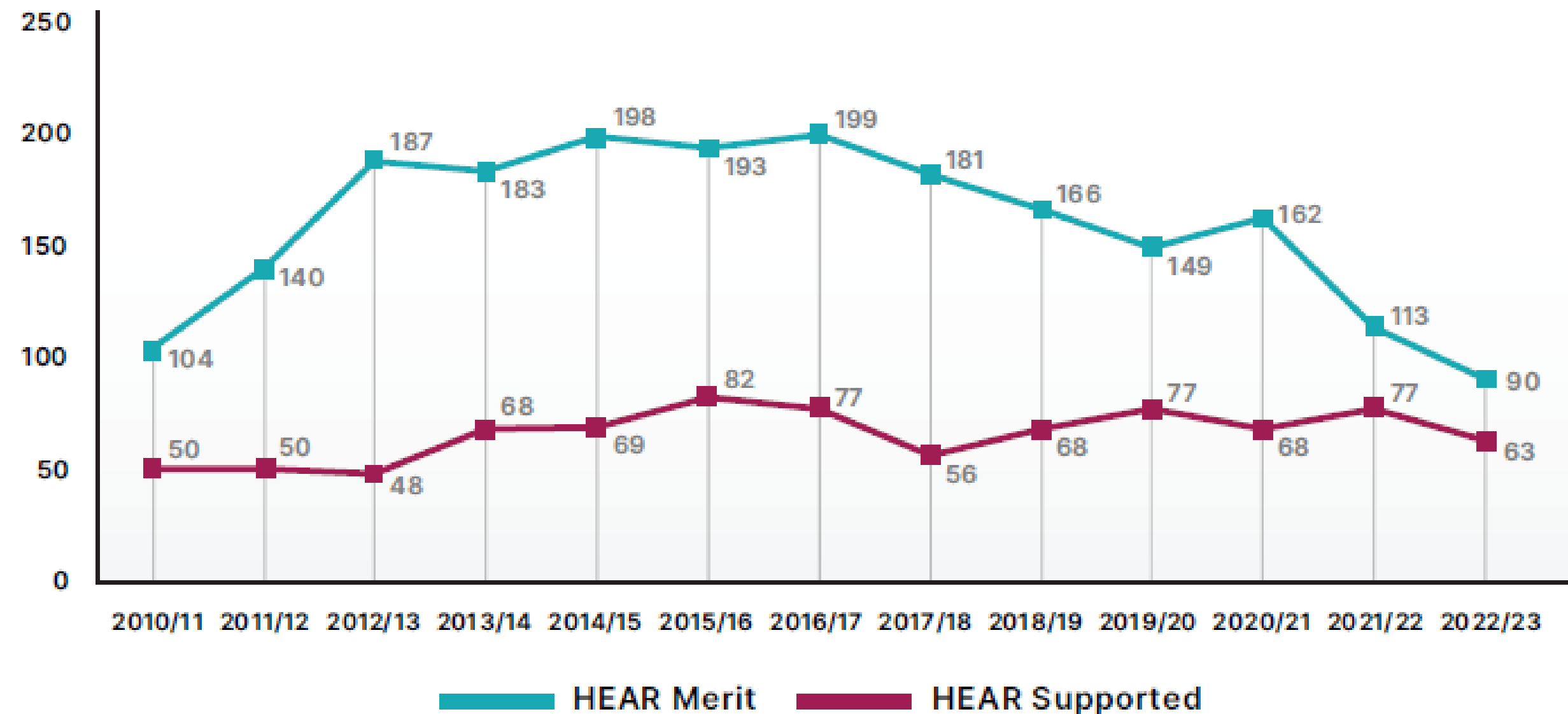
Higher Education Access Route (HEAR) New Entrants

Income

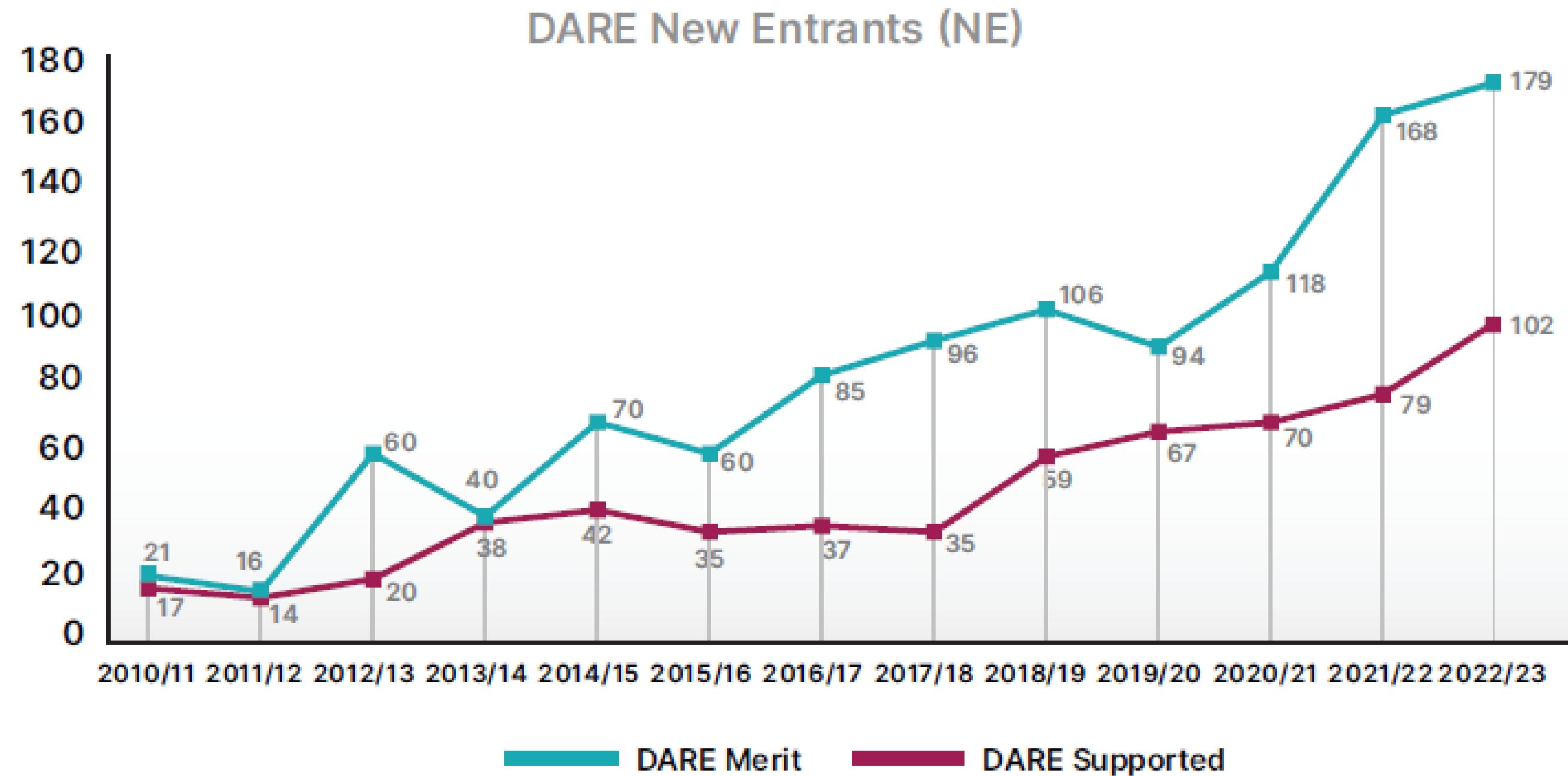
Medical Cards
Means Tested Social
Welfare Payment
Socio-economic Group
DEIS School
Area Profile



HEAR New Entrants (NE)



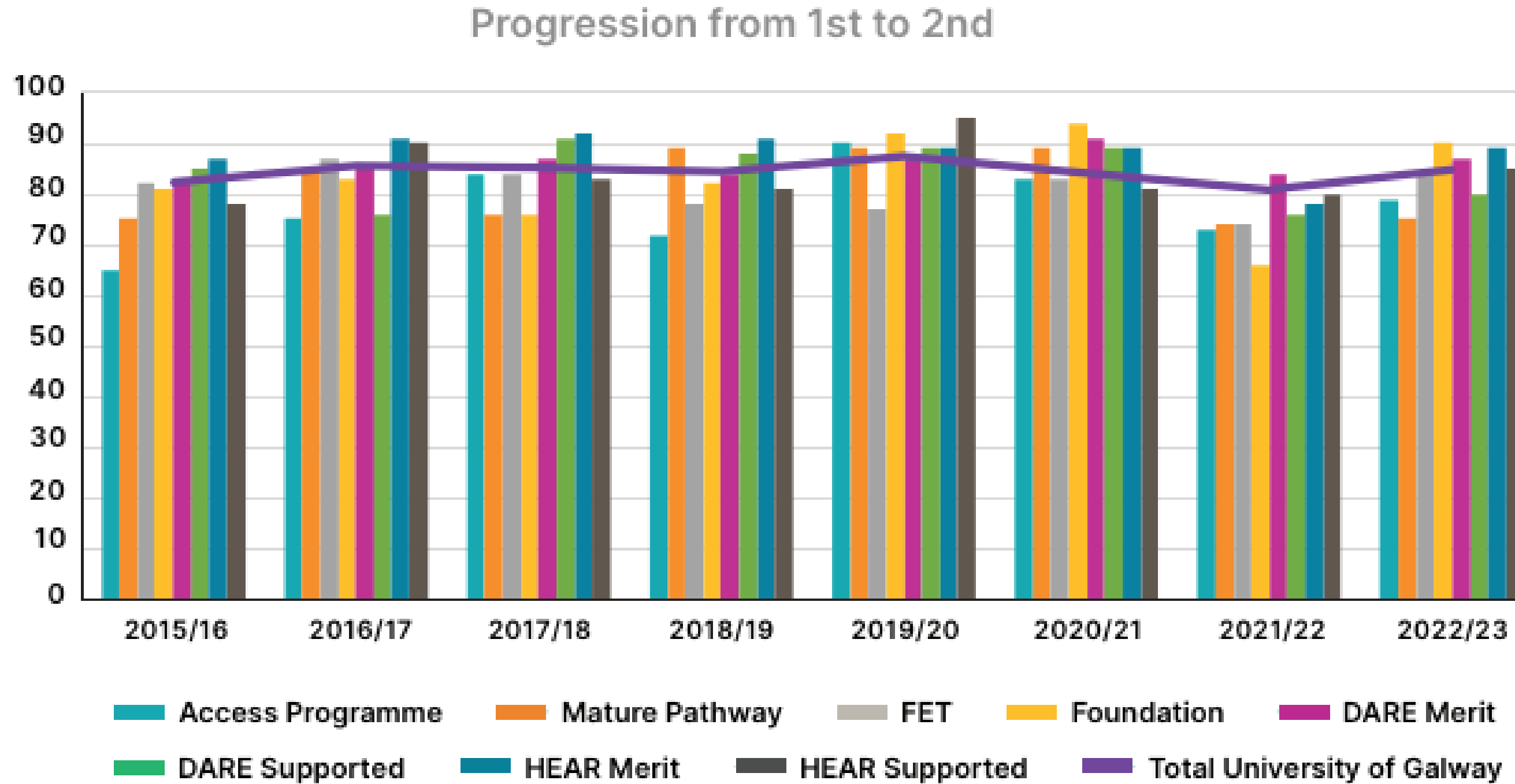
Disability Access Route to Education (DARE) New Entrants



	2010	2011	2012	2013	2014	2015	2016	2017	2018	2019	2020	2021	2022	2023
HEAR Merit	104	140	187	183	198	193	199	181	166	149	162	113	90	94
HEAR Supported	50	50	48	68	69	82	77	56	68	77	68	77	63	67
DARE Merit	21	16	60	40	70	60	85	96	106	94	118	168	179	225
DARE Supported	17	14	20	38	42	35	37	35	59	67	70	79	102	136
Foundation	50	52	49	37	50	31	40	22	11	11	21	16	7	10
FET	7	25	21	14	6	39	62	46	92	99	153	134	94	107
Mature	220	157	127	87	89	75	57	77	66	73	79	86	71	70
Mature Access	69	55	67	52	41	44	42	35	26	23	29	34	19	19
School Leavers Access	58	43	52	49	52	35	56	38	39	36	38	27	19	21
Total	571	552	631	598	617	594	655	586	633	629	738	734	644	752



Disaggregated Entry Route Progression Rates (1st to 2nd year)



Aggregated and Disaggregated Entry Route Progression Rates (1st to 2nd year)

	2015	2016	2017	2018	2019	2020	2021	2022
HEAR Merit	87%	91%	92%	91%	89%	89%	78%	89%
HEAR Supported	78%	90%	83%	81%	95%	81%	80%	85%
DARE Merit	82%	85%	87%	84%	87%	91%	84%	87%
DARE Supported	85%	76%	91%	88%	89%	89%	75%	80%
Foundation	81%	83%	76%	82%	92%	94%	66%	90%
FET	82%	87%	84%	78%	77%	83%	74%	84%
Mature	75%	85%	76%	89%	89%	89%	74%	75%
Mature and School Leaver Access Programme	65%	75%	84%	72%	90%	83%	73%	79%
Aggregated under-represented students	81%	86%	86%	87%	88%	88%	80%	85%



Equal Access Survey Data: Ethnicity

Ethnic/ Cultural Background	2010 /11	2011 /12	2012 /13	2013 /14	2014 /15	2015 /16	2016 /17	2017 /18	2018 /19	2019 /20	2020 /21	2021 /22
White Irish	90.95%	92.37%	93.16%	92.54%	93.32%	92.5%	91.99%	88.99%	87.22%	87.11%	82.96%	83.04%
Irish Traveller (and Roma added in 2020/21)	0.1%	0.08%	0.08%	0.2%	0.15%	0.1%	0.2%	0.4%	0.39%	0.1%	0.51%	0.55%
Any Other White Background	6.09%	5.45%	5.17%	6.36%	5.61%	6.1%	6.1%	6.6%	7.17%	7.5%	7.78%	7.95%
Black or Black Irish African	0.3%	1.12%	0.71%	0.41%	0.47%	0.6%	1.0%	1.3%	2.09%	1.7%	2.59%	2.27%
Other Black Background (new category in 2011/12)		0.32%	0.14%	0.20%	0%	0.1%	0.2%	0.2%	0.39%	0.6%	0.36%	0.27%
Asian or Asian Irish Chinese	0.71%	0.24%	0.26%	0.1%	0.21%	0.2%	0.3%	1.1%	1.06%	0.9%	0.74%	0.47%
Other Asian Background	1.82%	0.40%	0.44%	0.15%	0.21%	0.4%	0.3%	1.5%	1.66%	2.1%	2.23%	2.32%
Other (new category in 2020/21)											2.79%	3.10%

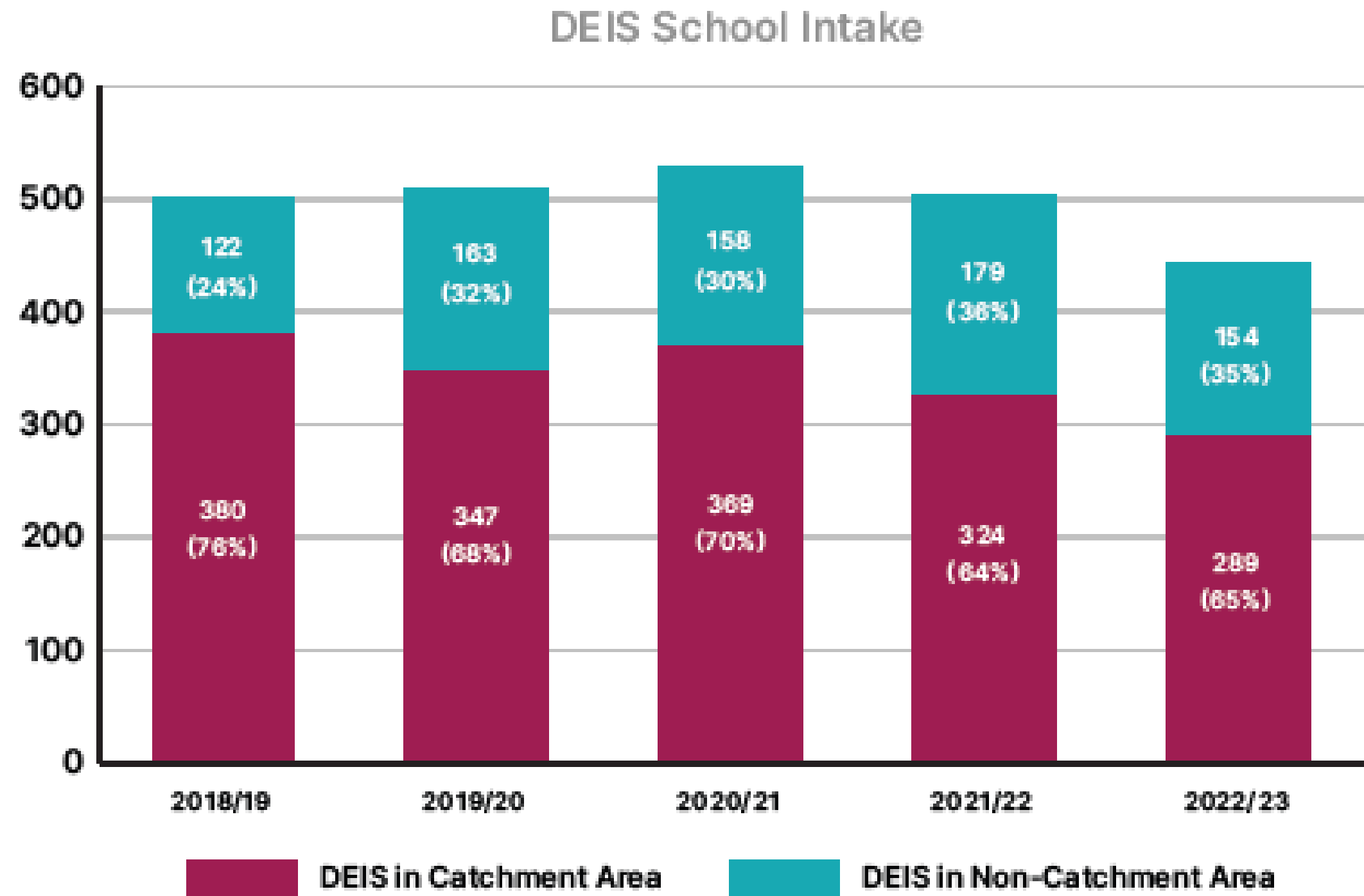


Disability Support Registrations Disaggregated by Primary Disability Category

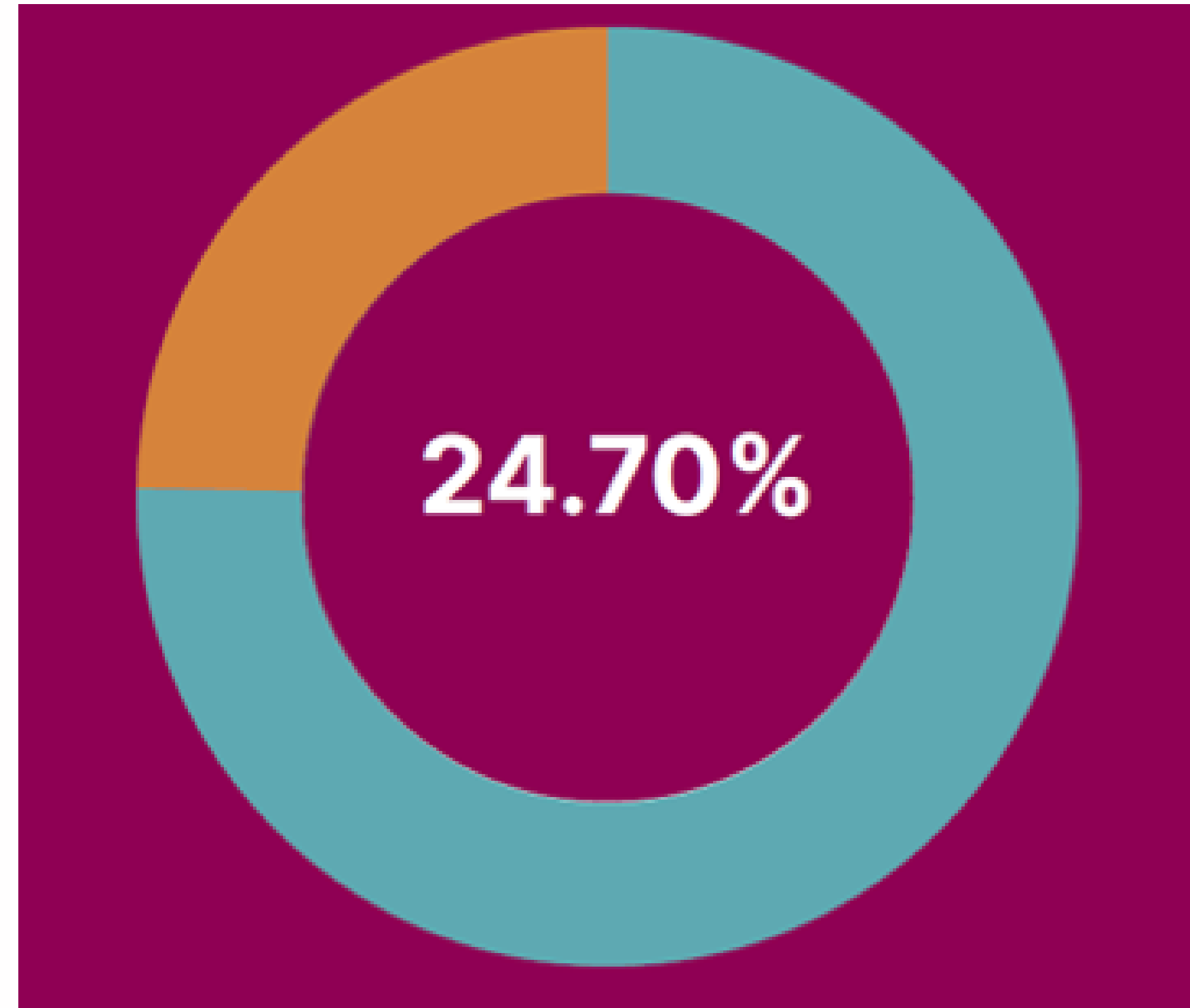
Primary Disability Category (UG&PG)	2015 /16	2016 /17	2017 /18	2018 /19	2019 /20	2020 /21	2021 /22	2022 /23
Attention Deficit (Hyperactivity) Disorder (ADD/ADHD)	25	28	39	44	62	74	105	155
Autism Spectrum Disorder (ASD)	33	39	51	59	67	77	92	107
Blind/Vision Impaired (B/VI)	15	20	22	25	30	25	30	36
Deaf/Hearing Impaired (D/HI)	12	13	21	25	24	39	44	40
Developmental Coordination Disorder(DCD)/Dyspraxia/Dysgraphia	25	24	31	40	43	59	61	67
Mental Health	86	117	207	262	290	327	297	365
Neurological	42	49	54	68	66	97	90	98
Physical/Mobility	54	57	74	87	89	80	88	92
Specific Learning Difficulty (SLD) – Dyslexia, Dyscalculia	286	300	329	347	341	433	441	438
Significant Ongoing Illness (SOI)	110	115	147	157	171	176	167	200
Other	0	0	0	0	0	0	1	1
TOTAL	688	762	975	1114	1183	1387	1416	1599



Delivering Equality of Opportunity in Schools (DEIS) New Entrants



Under-represented students as a Percentage of overall New Entrants



The Benefits of Good Data



- The collection of good institutional data in the area of WP has been key to University of Galway securing additional HEA Performance Funding (€833,333) to deliver a number of additional WP initiatives.
- The University of Galway's three year (1st January 2023 – 31st December 2025) Widening Access and Participation Project aims to further drive excellence in supporting access and participation across the student lifecycle.
- This project contains three pillars:
 1. Pre-entry – Increasing progression to Higher Education for the following target groups: DEIS, Disability and care-experienced students.
 2. Progression and Retention – Using innovative technological solutions to support student progression
 3. Data and impact – Developing a strong evidence-base for the Access Centre's widening participation initiatives

Delivering on educational opportunities for under-represented groups at National University of Ireland Galway



OLLSCOIL NA GAILLIMHÉ
UNIVERSITY OF GALWAY



OLLSCOIL NA GAILLIMHE

UNIVERSITY OF GALWAY